

LIBERTY

BY RICHMOND FURNITURE

Richmond

FURNITURE



WE WILL SEE YOU

AT THE  
TOP

A stylized white bird logo with its wings spread, positioned above the word 'LIBERTY'.

LIBERTY

BY RICHMOND FURNITURE

# FREEDOM TO CHOOSE

**Liberty** by Richmond Furniture was first established in 1987 and has proudly serviced the student accommodation and specialist project sector from conception. What we are all about is simple – the provision of high quality kitchens backed by solid service foundations.

The Liberty brand by Richmond Furniture is made right here in the United Kingdom. We manufacture in our very own highly-invested facility in Glossop, a picturesque market town in the Borough of High Peak, Derbyshire.

## Let Us Help You Breathe

Whilst we understand the importance of developing a range of furniture that both looks good and performs magnificently, we also understand our clients require a service that supports our great products. With Richmond Furniture, you will benefit from:

- Our dedicated Liberty service team to support you.
- Our Contract and Project Management team, specialists on fast moving, demanding, and time-sensitive projects.
- Our access to qualified installation teams with great experience attending to similar-scale projects.

## Experience Matters

Experience matters, so take advantage of ours. We know that in complex, demanding, high-volume projects, it is of the utmost important that your supplier is one with a proven history of successfully completing on time and to the highest possible standards. Our experts procurement team are masters of manufacturing and logistic capacity planning who ensure this is the case on every project.

## Bespoke As Standard

There are no restrictions to Liberty; enjoy the freedom of choice. We will create bespoke designs based on your requirements. You can select colour and finishes that reflect your unique identity and that of your specific project. Our bespoke designs are cost-effective, creating modules that fit precisely to the available room size.

Our bespoke offer is more than just furniture – it also encompasses the service we provide, designed around your specific needs to satisfy all of your performance criteria.

## The Importance Of Buying British

As a UK manufacturer we provide security of supply, ensuring no risk of delays to your important build schedule. In recent times we have seen the significant impact of delayed supply from Europe and beyond.

We understand the importance of security relating to the price offered and indeed our ability to maintain for the duration of the project. Manufacturing in the UK reduces our exposure to import tariffs and currency variations and helps with price stability.

## Partnerships That Work

We benefit from long standing relationships with all of our key material suppliers, safeguarding availability and supply.

## We Lead The Way With Lead Times

Like all good quality providers we will look to understand as early as possible if we have secured your project. This allows all of the necessary product set up and advanced procurement to ensure the project runs to plan. Once set up you will enjoy the industry's best lead times:

Full Furniture Rooms – Order Wednesday Week 1 – Delivered Week 4  
Remedial Premier Service – Report Week 1 – Delivered Week 2  
Remedial Premier Plus Service – Report Day 1 – Delivered Day 3

## Liberty | 35 Years of Doing What We Say We Will



## Your Choice

Freedom To  
Choose Colour

Freedom To  
Choose Style

Freedom To  
Choose Size

Bespoke As Standard

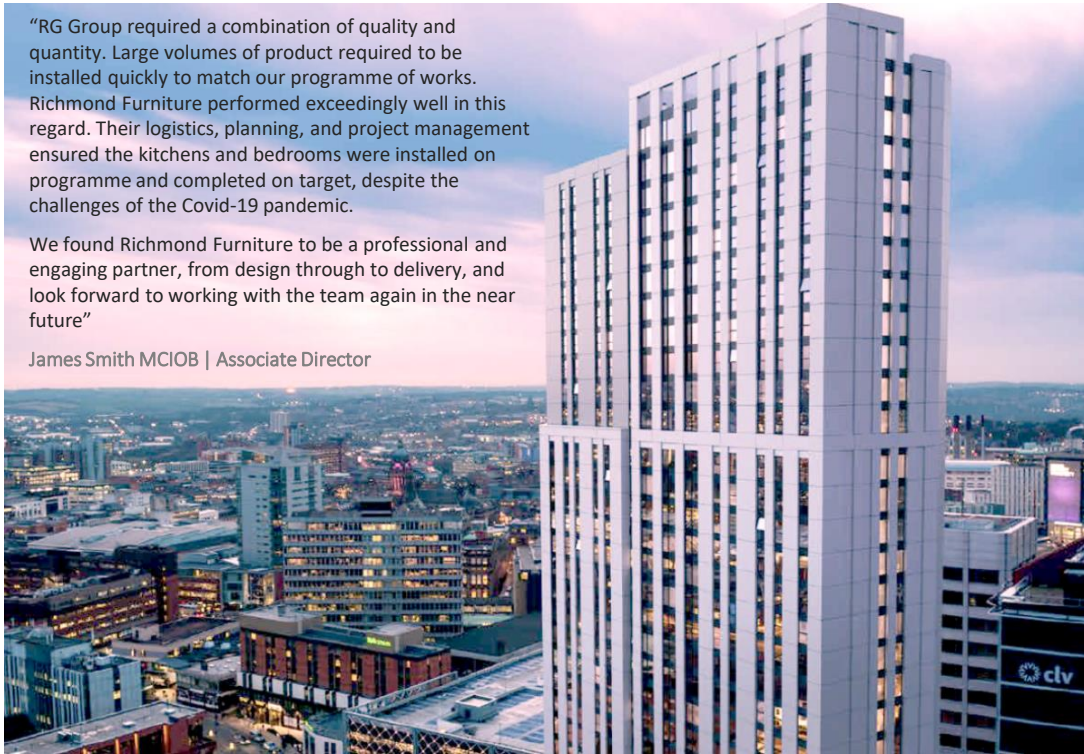


READY  
FOR THE  
NEXT BIG  
THING

“RG Group required a combination of quality and quantity. Large volumes of product required to be installed quickly to match our programme of works. Richmond Furniture performed exceedingly well in this regard. Their logistics, planning, and project management ensured the kitchens and bedrooms were installed on programme and completed on target, despite the challenges of the Covid-19 pandemic.

We found Richmond Furniture to be a professional and engaging partner, from design through to delivery, and look forward to working with the team again in the near future”

James Smith MCIQB | Associate Director



London-based developer **Olympian Homes** entrusted the **RG Group** to deliver on it’s commitment to build a landmark student accommodation tower block in the heart of Leeds.

The 37-storey building, located on Tower House Street, provides 752 student bedrooms, along with a cool roof terrace on the 35th floor. Simon Murray-Twinn, chief executive officer of Olympian Homes said on completion **“We are very excited to have delivered this striking building and to add it to the developing skyline of Leeds city centre.”**

Liberty by Richmond Furniture provided all 752 bespoke bedrooms along with all 231 kitchens, all supplied and installed to program. Lucky for us our team have a good head for heights – the building was the largest constructed in the North East & Yorkshire region at the time!



# BEYOND EXPECTATION

Marlix are proudly pioneering a new standard of modern, opulent student living.

*Let us introduce you to luxury student life – the Marlix way.*

*A brand-new development of student accommodation in Derby comprising of 32 self-contained contemporary suites, set over four floors in the heart of Derby's University Quarter.*

*The project aligns with the Marlix mission to deliver an unparalleled student experience for all of their residents.*

Marlix student studios are helping to breath new life into the University Quarter in Derby.

Managing Director Mark Waters and Project Consultant Georgina Bloomfield had a very clear vision for the project and were heavily involved with Liberty by Richmond Furniture in the design and specification of the kitchen furniture, Bosch appliances and Silestone solid stone surfaces.

Our SeriesI4our range of handleless kitchens in a mix of soft and dark greys are wonderfully complemented by the copper glass splashback and pure white solid surfaces.

We understood early in the process that the studios would be finished to an immaculate standard, with a real attention to detail. It was important, therefore, that our stylish interiors exceeded all expectations.

Mark Waters Managing Director of Marlix Student Living commented in reference to the studio kitchens **'they look great, I hope you are proud'** – Mark, we most certainly are!





**M** MARLIX  
STUDENT  
LIVING  
BEYOND EXPECTATION



# MORE POWER TO THE RICHMOND ELBOW

Caledonian secured this £50m contract to develop the first 'hotel-style' accommodation modules to be used by workers building the Hinkley Point nuclear power station.

The Hinkley Point Campus is the largest hotel-style development in Europe since the construction of Disneyland Paris. On completion it provided 1,496 en-suite bedrooms across 44 individual buildings at two locations. Richmond Furniture supplied and installed both the bedrooms and en-suites and in record time too – all rooms supplied over a 12-month period.

Caledonian manufactured the accommodation modules in their modular facility in Newark before onward delivery to Somerset.

Caledonian chief executive Paul Lang said: "**This is a hugely significant project for Caledonian and the wider offsite industry. This contract award is testament to the commitment of our project team and we are delighted to be working on one of the most important construction projects in Europe in more than 25 years.**"

A challenging project, managed on time and to specified standards by the Richmond team. We demonstrated our ability to work on large-scale projects minus any of the (too-often large scale!) drama.

Complicated work by uncomplicated people.





 **Caledonian  
Modular**

# SPECTACULAR SETTINGS





Center Parcs is one of the most famous brands in the British leisure industry, drawing millions of visitors annually to its five UK sites. The brand dates back to 1968, when the first village opened in the Netherlands.

Blackstone, the private equity firm, sold to Brookfield in 2015 in a deal reported to have been worth £2.4bn.

Richmond Furniture proudly secured the contract to replace all bedroom, bathroom and kitchen furniture in three of the five fabulous facilities. The project involved the supply of bespoke designed furniture to more than 300 lodges.

Our task was to supply quality furniture, built-to-last with very specific client requirements.

...it's not often you get to do the day job surrounded by a beautiful lake, sandy beach, and more than 400 acres of vibrant forest.





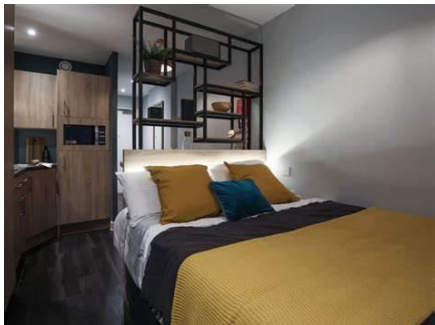
# ON YOUR MARKS, GET SET, GO

There are times when you simply do not get the opportunity to take in the sights. Liberty by Richmond Furniture found this to be the case when working with Novus Solutions on the iQ Hammersmith project in Central London and Grove, in the heart of Edinburgh.

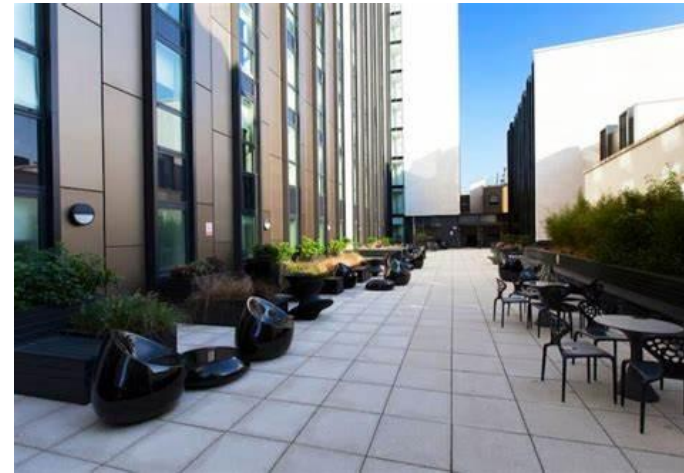


## iQ Hammersmith

Liberty by Richmond Furniture supplied the bedroom and kitchen furniture for 107 studio bedrooms in record breaking time. The project was designed within 3 weeks of the requirements being presented by the client, with the furniture supplied and delivered over the university summer break (July and August). The work was comfortably completed for the September student intake.



Now we relax – until next time.





## iQ Grove, Edinburgh

Grove provides high-quality student accommodation in Edinburgh city centre, with en-suite rooms, studios, apartments and a range of social and study spaces.

Edinburgh is a majestic city with a historic skyline, full of cobbled streets and a number of colourful characters. So let the adventure begin...

...unless, of course, you are busy manufacturing and delivering 142 studios with bedroom and kitchen furniture, all within a challenging 8-week period to project-determined timescales. You enjoy the attractions, and leave this part to the team at Liberty by Richmond Furniture.



# RANGE AVAILABILITY

**Liberty** is all about freedom of choice – so when it comes to your projects, you don't need to compromise on design and quality. We have an unrivalled selection of decors available on melamine-faced chipboard (MFC), Melamine Faced Medium Density Fibreboard (MFMDF) or laminate.

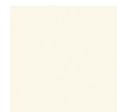
All of the decors shown are supplied by EGGER UK. As one of the leading wood-based material manufacturers, EGGER are fully aware of their responsibility towards the environment and society, a world leader who responsibly source all their materials and have the accreditation to prove it.

The feel of a surface is increasingly important, which is why we have extended our range to include ST19, ST20 and ST32. The development of these new textures make our woodgrain and material decors even more realistic.

Our decors are split into groups of whites, uni colours, material reproductions and wood reproductions.



## WHITE



Platinum White  
**W980 ST2**



Premium White  
**W1000 PG**



Premium White  
**W1000 ST19**



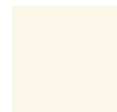
Solid Premium  
White  
**W1001 ST9**



Alpine White  
**W1100 PG**



Solid Alpine White  
**W1101 ST9**



Platinum White  
**W980 ST15**



Premium White  
**W1000 PM**



Premium White  
**W1000 ST38**



Solid Premium  
White  
**W1001 PG**



Alpine White  
**W1100 PM**



Solid Alpine White  
**W1101 PT**



Premium White  
**W1000 ST9**



Premium White  
**W1000 PT**



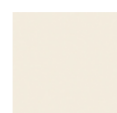
Premium White  
**W1000 ST76**



Alpine White  
**W1100 ST9**



Alpine White  
**W1100 PT**



Porcelain White  
**W1200 ST9**

# UNI COLOURS

 <p>Pebble Grey <b>U201 ST9</b></p>	 <p>Pebble Grey <b>U201 ST19</b></p>	 <p>Cashmere Grey <b>U702 ST9</b></p>	 <p>Lava Grey <b>U741 ST9</b></p>	 <p>Truffle Brown <b>U748 ST9</b></p>	 <p>Taupe Grey <b>U750 ST9</b></p>
 <p>Cashmere Grey <b>U702 PG</b></p>	 <p>Cashmere Grey <b>U702 PM</b></p>	 <p>Cashmere Grey <b>U702 PT</b></p>	 <p>Pearl Grey <b>U763 ST9</b></p>	 <p>Cubanite Grey <b>U767 ST9</b></p>	 <p>White Grey <b>U775 ST9</b></p>
 <p>Solid Cashmere Grey <b>U7021 ST9</b></p>	 <p>Angora Grey <b>U705 ST9</b></p>	 <p>Silk Grey <b>U707 ST9</b></p>	 <p>Monument Grey <b>U780 ST9</b></p>	 <p>Arctic Grey <b>U788 ST9</b></p>	 <p>Onyx Grey <b>U960 ST9</b></p>
 <p>Light Grey <b>U708 ST9</b></p>	 <p>Light Grey <b>U708 PG</b></p>	 <p>Light Grey <b>U708 PM</b></p>	 <p>Diamond Grey <b>U963 ST9</b></p>	 <p>Solid Diamond Grey <b>U9631 ST9</b></p>	 <p>Carbon Grey <b>U968 ST9</b></p>
 <p>Light Grey <b>U708 PT</b></p>	 <p>Solid Light Grey <b>U7081 ST9</b></p>	 <p>Dakar Grey <b>U717 ST9</b></p>	 <p>Soft Black <b>U899 ST9</b></p>	 <p>Solid Soft Black <b>U8991 ST9</b></p>	 <p>Graphite Grey <b>U961 ST2</b></p>
 <p>Stone Grey <b>U727 ST9</b></p>	 <p>Stone Grey <b>U727 PG</b></p>	 <p>Stone Grey <b>U727 PM</b></p>	 <p>Graphite Grey <b>U961 PG</b></p>	 <p>Graphite Grey <b>U961 PM</b></p>	 <p>Graphite Grey <b>U961 PT</b></p>

# UNI COLOURS

 <p>Graphite Grey U961 ST19</p>	 <p>Black U999 ST2</p>	 <p>Black U999 PG</p>	 <p>Caramel Nude U830 ST9</p>	 <p>Black Brown U989 ST9</p>	 <p>Vanilla Yellow U108 ST9</p>
 <p>Black U999 PM</p>	 <p>Black U999 PT</p>	 <p>Black U999 ST12</p>	 <p>Brilliant Yellow U114 ST9</p>	 <p>Citrus Yellow U131 ST9</p>	 <p>Saffron Yellow U140 ST9</p>
 <p>Black U999 ST19</p>	 <p>Solid Black U9991 PT</p>	 <p>Alabaster White U104 ST9</p>	 <p>Maize Yellow U146 ST9</p>	 <p>Curry Yellow U163 ST9</p>	 <p>Orange U332 ST9</p>
 <p>Cotton Beige U113 ST9</p>	 <p>Sand Beige U156 ST9</p>	 <p>Beige U200 ST9</p>	 <p>Sorbet Orange U340 ST9</p>	 <p>Siena Orange U350 ST9</p>	 <p>Indian Red U390 ST9</p>
 <p>Came Beige U216 ST9</p>	 <p>Crema Beige U222 ST9</p>	 <p>Velvet Yellow U107 ST9</p>	 <p>Rose white U313 ST9</p>	 <p>Antique Rose U325 ST9</p>	 <p>Fuchsia Pink U337 ST9</p>
 <p>Apricot Nude U232 ST9</p>	 <p>Nougat Brown U807 ST9</p>	 <p>Dark Brown U818 ST9</p>	 <p>Flamingo Pink U363 ST9</p>	 <p>Burgundy Red U311 ST9</p>	 <p>China Red U321 ST9</p>



# UNI COLOURS

	Chilli Red <b>U323 ST9</b>		Chilli Red <b>U323 PG</b>		Lipstick Red <b>U328 ST9</b>		Deep Sea Blue <b>U560 ST9</b>		Midnight Blue <b>U570 ST9</b>		Indigo Blue <b>U599 ST9</b>
	Garnet Red <b>U399 ST9</b>		Aubergine Purple <b>U330 ST9</b>		Powder Violet <b>U400 ST9</b>		Indigo Blue <b>U599 PM</b>		Indigo Blue <b>U599 PT</b>		Turquoise Blue <b>U633 ST9</b>
	Crocus Pink <b>U404 ST9</b>		Dark Violet <b>U414 ST9</b>		Purple <b>U420 ST9</b>		May Green <b>U600 ST9</b>		Forest Green <b>U606 ST9</b>		Pistachio Green <b>U608 ST9</b>
	Violet <b>U430 ST9</b>		Glacier blue <b>U500 ST9</b>		Tyrolean Blue <b>U504 ST9</b>		Wasabi Green <b>U617 ST9</b>		Kiwi Green <b>U626 ST9</b>		Lime Green <b>U630 ST9</b>
	Smoke Blue <b>U507 ST9</b>		French Blue <b>U515 ST9</b>		Horizon Blue <b>U522 ST9</b>		Fjord Green <b>U636 ST9</b>		Niagara Green <b>U646 ST9</b>		Fern Green <b>U650 ST9</b>
	Delft Blue <b>U525 ST9</b>		Polar Blue <b>U533 ST9</b>		Denim Blue <b>U540 ST9</b>		Emerald Green <b>U655 ST9</b>		Amazon Green <b>U660 ST9</b>		Shadow Black <b>U998 ST38</b>

## UNI COLOURS



Stone Grey  
**U727 PT**



Dust Grey  
**U732 ST9**



Dust Grey  
**U732 PG**



Dust Grey  
**U732 PM**



Dust Grey  
**U732 PT**



Dark Taupe  
**U740 ST9**

## MATERIAL REPRODUCTIONS



Beige Textile  
**F416 ST10**



Grey Textile  
**F417 ST10**



Brown Linen  
**F424 ST10**



Anthracite Linen  
**F433 ST10**



Anthracite Metal  
Fabric  
**F461 ST10**



Light Grey Chicago  
Concrete  
**F186 ST9**



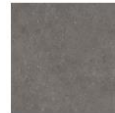
Dark Grey Chicago  
Concrete  
**F187 ST9**



Light Concrete  
**F274 ST9**



White Sparkle  
Grain  
**F486 ST76**



Grey Sparkle Grain  
**F487 ST76**



Black Sparkle  
Grain  
**F490 ST76**



White Chromix  
**F637 ST16**



Chromix Silver  
**F638 ST16**



Bronze Chromix  
**F642 ST16**



Light Cefalu  
Concrete  
**F823 ST10**



Light Grey  
Valmasino Marble  
**F074 ST75**



Grey Siena Marble  
**F095 ST87**



White Carrara  
Marble  
**F204 ST9**

# MATERIAL REPRODUCTIONS



White Levanto  
Marble  
**F812 ST9**



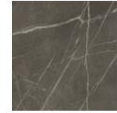
White Levanto  
Marble  
**F812 PG**



White Levanto  
Marble  
**F812 PM**



White Carrara  
Marble  
**F204 ST75**



Anthracite Pietra  
Grigia  
**F205 ST9**



Black Pietra Grigia  
**F206 ST9**



White Levanto  
Marble  
**F812 PT**



Anthracite Jura  
Slate  
**F242 ST10**



Silver Grey Metal  
Slate  
**F628 ST16**



Black Pietra Grigia  
**F206 PG**



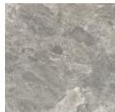
Black Pietra Grigia  
**F206 PM**



Black Pietra Grigia  
**F206 PT**



Black Gold Metal  
Slate  
**F629 ST16**



Grey Braganza  
Granite  
**F076 ST75**



Light Grey Metal  
Rock  
**F120 ST76**



Metallic Inox  
**F500 ST20**



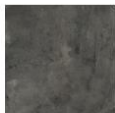
Brushed  
Aluminium  
**F501 ST2**



Aluminium  
**F509 ST2**



Light Grey Metal  
Rock  
**F120 PT**



Anthracite Metal  
Rock  
**F121 ST87**



Travertin Tavolo  
taupe  
**F127 ST75**



Dark Steel  
**F627 PT**



Brushed Brass  
**F784 ST20**



Ferro Bronze  
**F302 ST87**



Titanium Grey  
Steelcut  
**F313 ST10**



Golden Patina  
**F411 ST20**



Cubanite  
Steelbrush  
**F434 ST20**



Indigo Blue  
Metallic  
**F462 ST20**



Platinum Grey  
Metallic  
**F463 ST20**

# WOOD REPRODUCTIONS



White Halifax Oak  
**H1176 ST37**



Natural Halifax  
Oak  
**H1180 ST37**



Tobacco Halifax  
Oak  
**H1181 ST37**



Pasadena Pine  
**H1486 ST36**



Grey-Beige Tossini  
Elm  
**H1210 ST33**



Brown Tossini Elm  
**H1212 ST33**



Sand Grey Glazed  
Halifax Oak  
**H1336 ST37**



Pewter Halifax Oak  
**H3176 ST37**



Black Glazed  
Halifax Oak  
**H3178 ST37**



White Tossini Elm  
**H1701 ST33**



Dark Brown Tossini  
Elm  
**H1702 ST33**



Oak Butcherblock  
**H193 ST12**



Cognac Brown  
Sherman Oak  
**H1344 ST32**



Grey Sherman Oak  
**H1345 ST32**



Anthracite  
Sherman Oak  
**H1346 ST32**



Brown Kansas Oak  
**H1113 ST10**



Black-Brown  
Sorano Oak  
**H1137 ST12**



Natural Bardolino  
Oak  
**H1145 ST10**



White Gladstone  
Oak  
**H3335 ST28**



Sand Gladstone  
Oak  
**H3309 ST28**



Tobacco Gladstone  
Oak  
**H3325 ST28**



Grey Bardolino  
Oak  
**H1146 ST10**



Grey Arizona Oak  
**H1150 ST10**



Brown Arizona Oak  
**H1151 ST10**



Grey-Beige  
Gladstone Oak  
**H3326 ST28**



Sepia Gladstone  
Oak  
**H3342 ST28**



Sand Orleans Oak  
**H1377 ST36**



Black-Brown  
Thermo Oak  
**H1199 ST12**



Sand Beige  
Whiteriver Oak  
**H1312 ST10**



Grey Brown  
Whiteriver Oak  
**H1313 ST10**



Brown Orleans Oak  
**H1379 ST36**



Dark Brown  
Charleston Oak  
**H3154 ST36**



Natural Anthon Oak  
**H3330 ST36**



Natural Wild Oak  
**H1318 ST10**



Vintage Santa Fe  
Oak  
**H1330 ST10**



Grey Santa Fe Oak  
**H1331 ST10**

# WOOD REPRODUCTIONS



Light Sorano Oak  
**H1334 ST9**



Graphite Denver Oak  
**H1387 ST10**



Truffle Brown Denver Oak  
**H1399 ST10**



Cognac Kendal Oak  
**H3398 ST12**



Sand Lyon Ash  
**H1298 ST22**



Sand Kentucky Chestnut  
**H1710 ST10**



Dark Hunton Oak  
**H2033 ST10**



Natural Davos Oak  
**H3131 ST12**



Truffle Brown Davos Oak  
**H3133 ST12**



Bavarian Beech  
**H1511 ST15**



Ellmau Beech  
**H1582 ST15**



Mainau Birch  
**H1733 ST9**



Beige Grey Lorenzo Oak  
**H3146 ST19**



Grey Corbridge Oak  
**H3156 ST12**



Vicenza Oak  
**H3157 ST12**



Natural Mandal Maple  
**H3840 ST9**



Champagne Hard Maple  
**H3860 ST9**



Walnut Butcherblock  
**H194 ST12**



Grey Vicenza Oak  
**H3158 ST19**



Natural Kendal Oak  
**H3170 ST12**



Oiled Kendal Oak  
**H3171 ST12**



Lincoln Walnut  
**H1714 ST19**



Natural Pacific Walnut  
**H3700 ST10**



Tobacco Pacific Walnut  
**H3702 ST10**



Natural Hamilton Oak  
**H3303 ST10**



Natural Nebraska Oak  
**H3331 ST10**



Grey Nebraska Oak  
**H3332 ST10**



Natural Carini Walnut  
**H3710 ST12**



Natural Hickory  
**H3730 ST10**



Natural Dijon Walnut  
**H3734 ST9**



Kaisersberg Oak  
**H3349 ST19**



Natural Lancaster Oak  
**H3368 ST9**



Natural Corbridge Oak  
**H3395 ST12**



Cascina Pine  
**H1401 ST22**



Fineline Cream  
**H1424 ST22**



Bramberg Pine  
**H1487 ST22**

# WOOD REPRODUCTIONS



White Aland Pine  
**H3430 ST22**



Polar Aland Pine  
**H3433 ST22**



White Fleetwood  
**H3450 ST22**



Navarra Ash  
**H1250 ST36**



White Mountain Larch  
**H3403 ST38**



Brown Mountain Larch  
**H3404 ST38**



Champagne Fleetwood  
**H3451 ST22**



Lava Grey Fleetwood  
**H3453 ST22**



Natural Pine  
**H3470 ST22**



Anthracite Mountain Larch  
**H3406 ST38**



Thermo Brown Mountain Larch  
**H3408 ST38**



Attic Wood  
**H1400 ST36**



Verona Cherry  
**H1615 ST9**



Locarno Cherry  
**H1636 ST12**



Natural Brown Branson Robinia  
**H1251 ST19**



Anthracite Finitione Metallic  
**H3190 ST19**



Brown Finitione Metallic  
**H3192 ST19**



Grey Beige Branson Robinia  
**H1252 ST19**



Truffle Brown Branson Robinia  
**H1253 ST19**



Light Lakeland Acacia  
**H1277 ST9**



Grey-Beige Bamenda  
**H1115 ST12**



Coco Bolo  
**H3012 ST22**



Mali Wenge  
**H3058 ST22**



Shorewood  
**H3090 ST22**



Whitewood  
**H1122 ST22**



Graphitewood  
**H1123 ST22**

# OUR ACCREDITATIONS



## Accreditation matters

Our business believes accreditation matters. As a business that cares for the environment, understands the importance of sustainability and always conscious of our carbon footprint, we know the value of being able to demonstrate this through certification.



The mark of responsible forestry



# AND TO FINISH



"iQ Student take great pride in providing our students with high quality, design led living spaces which combine modern living with comfort and style. Richmond Furniture share this philosophy and delivered high quality, design led kitchen and bedroom furniture. Richmond continued to perform to these standards even during the Covid 19 pandemic and actively mitigated the challenges it presented.

Richmond Furniture provided a robust, yet aesthetically pleasing product whilst only using high quality, responsibly sourced materials. Richmond Furniture have proven themselves to be a valued supply chain partner and we look forward to working with them in the near future."

James Atkinson | Development Manager



Richmond Furniture Limited  
Regent House  
Hadfield Industrial Estate  
Hadfield  
SK13 1BS

Tel | 01457 767000

Fax | 01457 767066

E mail | [info@Richmond-furniture.co.uk](mailto:info@Richmond-furniture.co.uk)

Richmond  
● ● ● ● FURNITURE